



Building a Comprehensive Conservation Network: Mid-Galiano Island

Vision

To establish a comprehensive conservation network of land and water in the mid-Galiano Island area. This network will build upon and connect existing protected areas.

Opportunity

Over the past few decades a variety of critical habitats have been identified and protected in the mid-Galiano Island area (see attached map). These existing parcels come under a variety of jurisdictions: Trust Fund Board, BC Parks, Crown Lands, Islands Trust and the Galiano Conservancy Association. Galiano Conservancy has a vision to connect these important conservation areas as part of a comprehensive plan. Matching funds available through the Natural Areas Conservation Program, administered by the Nature Conservancy of Canada, has provided us with the opportunity to realize this project.

Outline of Plan

Galiano is a long, slender island, roughly 6,000 ha in size, and is entirely contained within the endangered Coastal Douglas-fir zone (CDF), an ecological classification that has recently been ranked as imperiled both provincially and globally. The CDF has the greatest density of species of conservation concern in BC and has been identified as the highest priority for conservation.

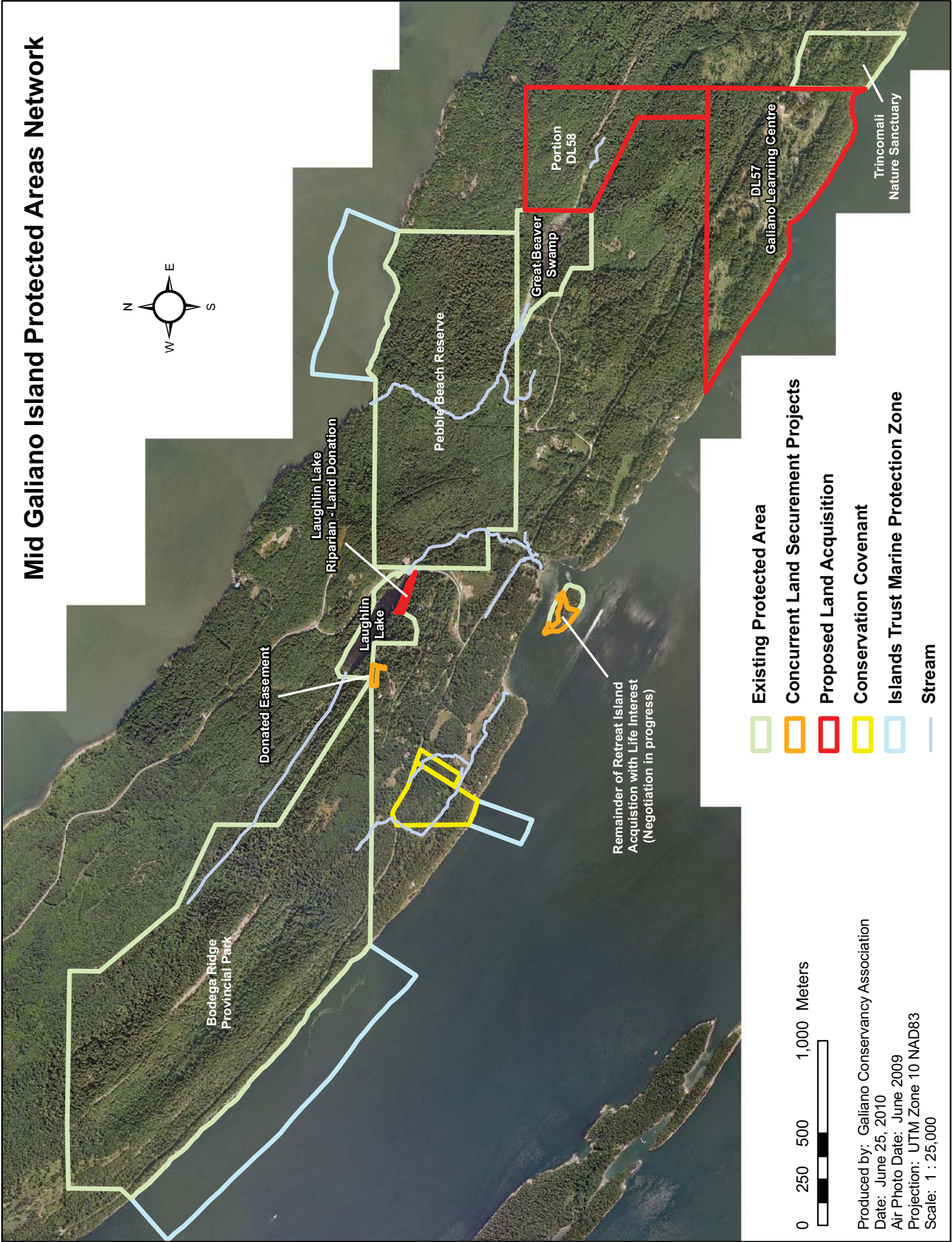
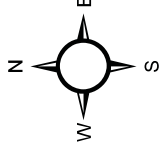
Mid-Galiano is bound by the Strait of Georgia to the Northeast and Trincomali Channel to the Southwest. The proposed conservation network extends from Trincomali across to Georgia Strait and back again; it would protect a significant portion of the island's topographic variation and associated ecological diversity and would secure valuable pathways for plant and animal migration from sea level to Galiano's highest ridgeline. The network includes threatened coastal and inland bluffs with their Garry Oak and associated ecosystems; significant wetlands; and mature coastal Douglas-fir forests.

Marine areas adjacent to existing protected shoreline are presently in a Marine Protection Zone designated through local bylaws - proposed additions to the conservation network would significantly increase the area under Marine Protection zoning. These areas provide important habitat for many species of rockfish and other marine life.

The success of this project could serve as a model for community-based conservation planning.

To discuss this opportunity further, please contact Ken Millard, Director (250) 539-2424

Mid Galiano Island Protected Areas Network



Bodega Ridge Provincial Park

Donated Easement

Laughlin Lake Riparian - Land Donation

Laughlin Lake

Pebble Beach Reserve

Great Beaver Swamp

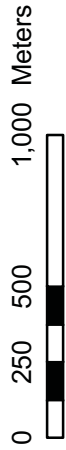
Portion DL58

DL57
Galiano Learning Centre

Trincomali Nature Sanctuary

Remainder of Retreat Island Acquisition with Life Interest (Negotiation in progress)

- Existing Protected Area
- Concurrent Land Securement Projects
- Proposed Land Acquisition
- Conservation Covenant
- Islands Trust Marine Protection Zone
- Stream



Produced by: Galiano Conservancy Association
 Date: June 25, 2010
 Air Photo Date: June 2009
 Projection: UTM Zone 10 NAD83
 Scale: 1 : 25,000